

# **RFXtrxLAN 433**

and

# **RFXtrxLAN 868**



[www.rfxcom.com](http://www.rfxcom.com)

# Table of Contents

1. Introduction.....	3
2. Contents .....	3
3. Installation of the RFXtrxLAN 433/868 .....	4
4. LAN version .....	4
4.1. Configure the LAN controller .....	4
4.2. Configure the Serial Port .....	5
4.3. Configure the TCP communication.....	6
5. Restore factory settings.....	7
6. Configure the transceiver .....	8
7. Update transceiver firmware .....	9
8. Warning: .....	11
9. License .....	11
10. Copyright notice.....	11
11. Revision History.....	11

# 1. Introduction

The RFXtrxLAN 433 contains the RFX433 transceiver.  
The RFXtrxLAN 868 contains the RFX868 transceiver.

The transceiver is accessed using TCP/IP.

The default settings are:

- TCP port 10001 and DHCP
- Username/Password: admin / admin

## **Important:**

The USB connection of the RFXtrx cannot be used as USB port and is only used to power the module!!

# 2. Contents.



### 3. Installation of the RFXtrxLAN 433/868

Connect the antenna.

Connect the 5V/1Amp DC power supply and the Ethernet cable.

The red LED of the RFXtrx should be on for about 3 seconds followed by a short blink of the green/yellow LED. And the right LED on the Ethernet connector should blink and the left LED should be on.

Note: Do not locate the RFXtrxLAN close to metal objects, electronic equipment, or power lines.

### 4. LAN version

#### 4.1. Configure the LAN controller

The RFXtrxLAN is delivered with DHCP.

To find the IP address of the RFXtrxLAN use for example the free NetScan tool

<https://www.netscantools.com>

Use a browser to configure the LAN-controller and enter the IP address of the RFXtrxLAN, for example: <http://192.168.1.237> or use the Host Name <http://rftrxlan>

Default Username / Password: admin admin

Set a fixed IP address for normal use. (select DHCP OFF) or configure the RFXtrxLAN in your router. If multiple RFXtrxLAN devices are in use set the Host Name unique.

Advice: If you change the Username/Password write it down on a label inside the RFXtrxLAN

The screenshot shows the 'System Settings' web interface for the RFXtrxLAN device. The page title is 'System Settings' with the subtitle 'Change the device system settings'. The interface is organized into several sections, each with a green header:

- Authentication:** Contains fields for 'User Name' (set to 'admin') and 'Password' (masked with '\*\*\*\*\*').
- Basic Settings:** Contains a 'Host Name' field set to 'RFXtrxLAN'.
- WAN Settings:** Contains a 'DHCP' toggle switch set to 'ON' and a 'DNS' field set to '8.8.8.8'.
- Telnet Settings:** Contains an 'Enable' toggle switch set to 'OFF'.
- Web Settings:** Contains an 'Enable' toggle switch set to 'ON' and a 'Web Port' field set to '80'.
- NTP Settings:** Contains an 'Enable' toggle switch set to 'OFF'.

## 4.2. Configure the Serial Port

The COM port is delivered with the correct settings.

### Serial Port Settings

change the device serial port settings

Basic Settings	
Baud Rate	38400
Data Bit	8
Stop Bit	1
Parity	None

Buffer Settings	
Buffer Size	512
Gap Time	50

Flow Control Settings	
Flow Control	Disable

Cli Settings	
Cli	Disable

Protocol Settings	
Protocol	None

### 4.3. Configure the TCP communication

The RFXtrxLAN is delivered with the correct configured TCP Server with port 10001  
You can change the Local Port and Max Accept if required.  
Set Max Accept to 1 unless you want to connect the RFXtrxLAN with multiple applications

## Communication Settings

change the device socket settings

Basic Settings	
Name	netp
Protocol	Tcp Server

Socket Settings	
Local Port	10001
Buffer Size	512
Keep Alive(s)	60
Timeout(s)	0

Protocol Settings	
Max Accept	5

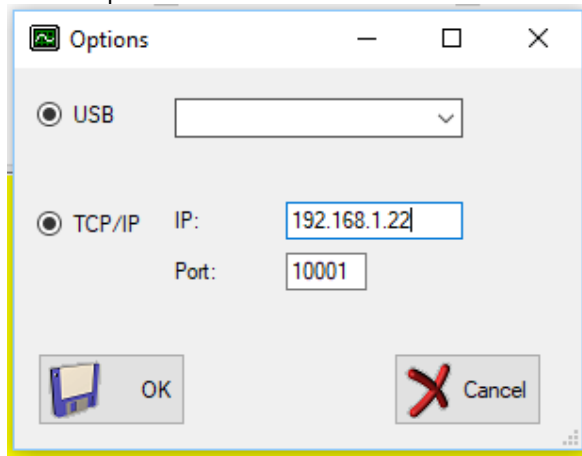
More Settings	
Security	Disable
Route	Uart

## **5. Restore factory settings**

The reload button is behind the very small hole in the front panel next to the antenna connector.  
To restore the module to factory settings, press the reload button with a needle for at least 3 seconds.

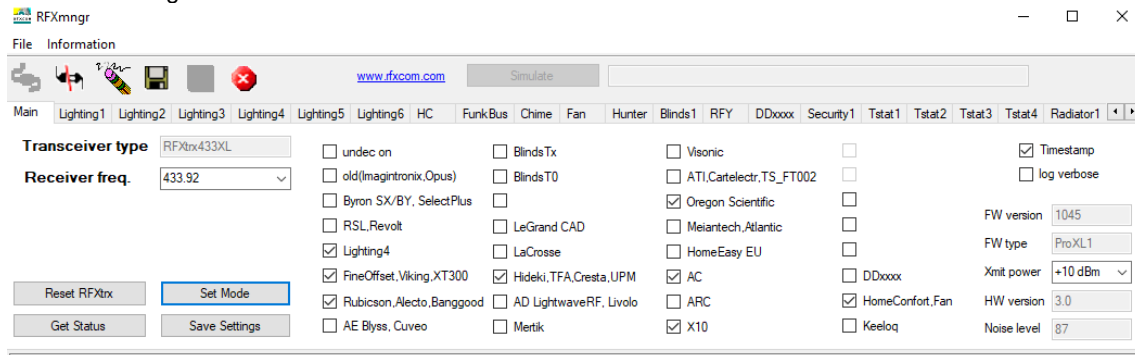
## 6. Configure the transceiver

The transceiver can be tested and configured with the RFXmng program.  
Set the IP address of the RFXtrxLAN or use the Host Name.  
Connect port 10001:

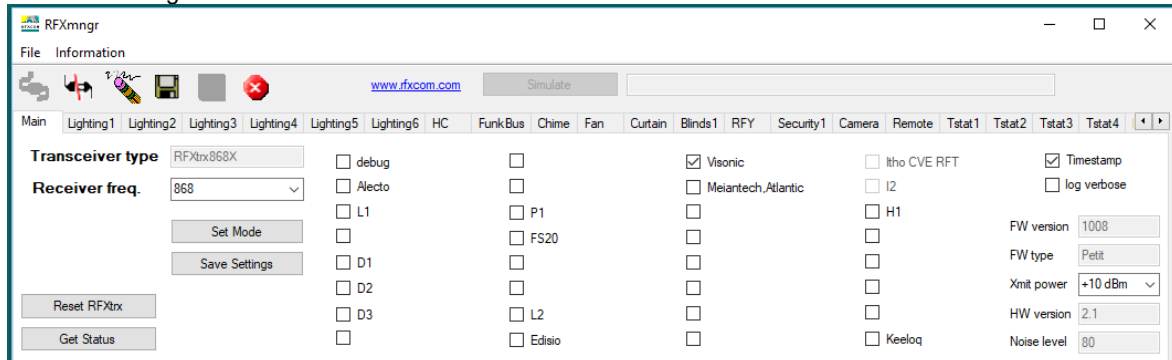


Select the protocols necessary for receive and click Set Mode followed by Save Settings.  
No need to select protocols for transmit!  
Note that you can only select 1 protocol for receive in the RFX868 because each protocol uses different frequencies and modulation!!!

RFX433 settings:



RFX868 settings:



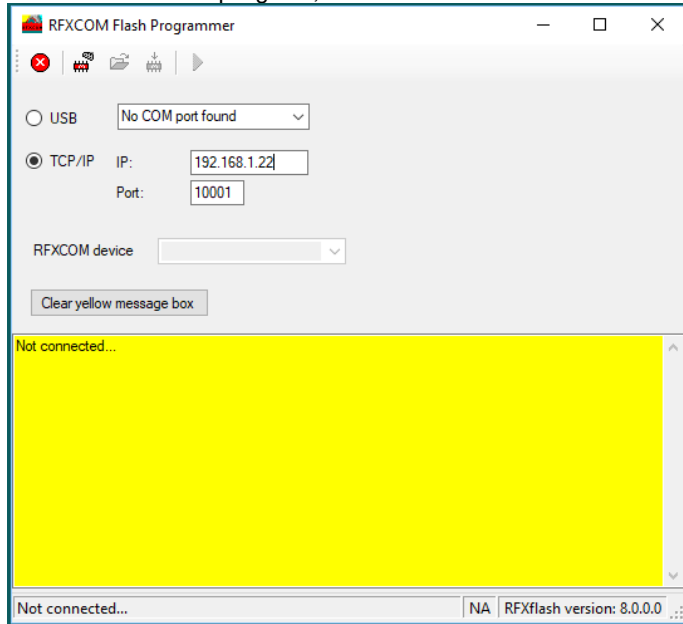


## 7. Update transceiver firmware

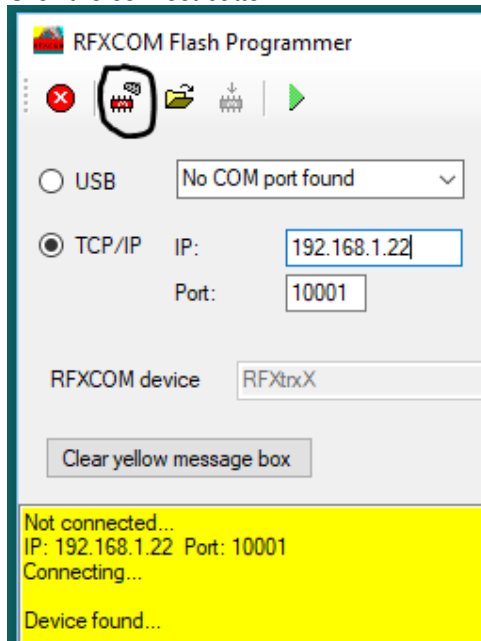
If required, the transceiver firmware can be updated with the RFXflash program.

**Stop all connections with the transceiver and be sure that no other program connects the transceiver during flash of the transceiver!**

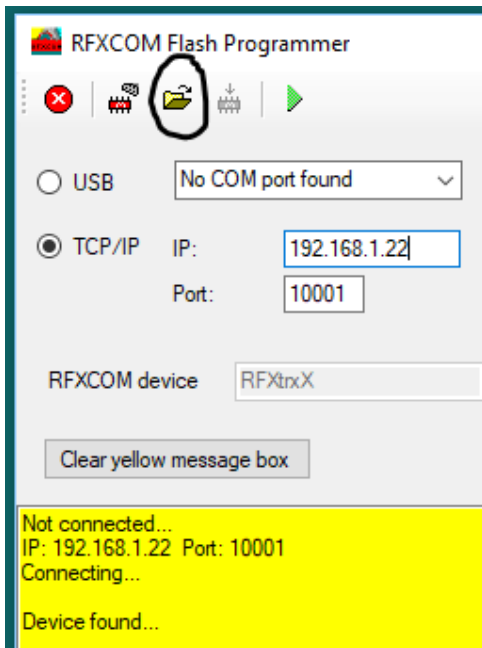
Start the RFXflash program, select the IP address and select the port (normally 10001).



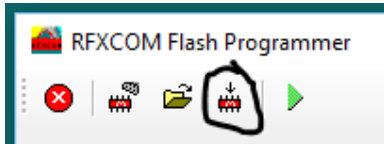
Click the connect button:



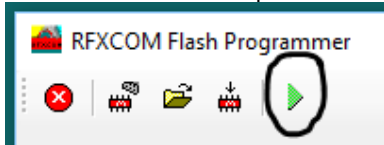
Click the Open HEX file and select the correct firmware file.



Click the Write device button. The firmware will be flashed in about one minute:



At the end of the flash procedure click the Normal Execution Mode button:



Test the RFXtrx with RFXmngnr.

## 8. Warning:

- RF signals are possible disturbed, and it has not been justified for this equipment at uses in circumstances where life-threatening or dangerous situations are possible.
- RFXCOM HARDWARE AND SOFTWARE IS NOT INTENDED FOR USE IN THE OPERATION OF NUCLEAR FACILITIES, AIRCRAFT NAVIGATION OR COMMUNICATION SYSTEMS, AIR TRAFFIC CONTROL SYSTEMS, LIFE SUPPORT MACHINES OR OTHER EQUIPMENT IN WHICH THE FAILURE OF THE SOFTWARE COULD LEAD TO DEATH, PERSONAL INJURY, OR SEVERE PHYSICAL OR ENVIRONMENTAL DAMAGE.

## 9. License

- You are allowed to use RFXCOM software, protocols and Written Materials with RFXCOM hardware only.
- All copyright and other proprietary notices associated with RFXCOM software, protocols and Written Materials shall be visible to all users.
- You may not sell, distribute, loan, rent, lease, license, sublicense or otherwise assign or transfer RFXCOM software or RFXtrx protocols or Written Materials unless expressly authorized in writing by RFXCOM.
- You may not use any RFXCOM device, software or protocol as part of an exclusive or patented product without the express prior written permission of RFXCOM.
- You may not alter, modify, adapt or create derivative works based on any part of RFXCOM software or protocols or Written Materials in any way, including translating, reverse engineering, disassembling or decompiling the software.

## 10. Copyright notice

- All RFXCOM hardware, software, protocols and Written Materials are protected by copyright laws, and may not be reproduced, republished, distributed, transmitted, displayed, broadcast or otherwise exploited in any manner without the express prior written permission of RFXCOM.
- Netherlands Copyright and international treaty provisions protect the SOFTWARE, HARDWARE, RFXtrx protocols and Written Materials and shall be subject to the exclusive jurisdiction of the Netherlands Courts
- RFXCOM reserves all rights not expressly granted herein.

## 11. Revision History

Version 0.0 June 29, 2023  
Initial version